

Crèche

Meet the team



Anna Boletta
*Early Years Co-Ordinator &
Crèche Lead*



Allison Pereira
Crèche team facilitator



Brighter Futures



Zoe Pryor
Crèche team facilitator



Jenna-Leigh
Garnier
Crèche team facilitator



What will my child need?

During their stay within crèche your child will need a named bag, with a change of clothes, nappies, baby wipes and a comforter if they have one.



What will my child eat?

During some crèches the children will have a snack which is provided by the parents, please make sure they are nut free and you have written down on the signing in sheet what it is.

Allergies and sickness.

If your child has any allergies please inform the crèche workers as soon as they start.

In cases of sickness and/or diarrhoea, please leave at least **48 hours** before bringing your child back into crèche.

If you want to see a list of other illnesses and when your child can come back after starting antibiotics, please just ask one of the creche team, and they will show you the Brighter Futures sickness policy.



How will I know what my child has done during the session?

When the children are in the crèche room we will write on the large white board about their session, any nappies and what they have eaten.



Medication and First Aid.

If an accident happens while your child is in our crèche area, one of the Paediatric First Aid trained members of the crèche team will deal with the injuries. You will then be informed and asked to sign the accident form which will then be given to your keyworker for your personal file.

Crèche one-to-one support.

Unfortunately, due to staff/child ratios in crèche, we are unable to offer one-to-one support for your child.

If you have any questions or concerns regarding this, please speak to your dedicated keyworker .

Concerns, complaints and suggestions.

If you have any concerns, please speak to any of the following:

- Our creche lead Anna
- One of the crèche team
- Your dedicated keyworker

Any compliments or complaints should be directed to the Manager of Brighter Futures Lauren Maggs in the first instance.

l.maggs@brighterfutures.org.je

What does a typical 90-minute session in crèche look like?

- Parents sign the children in.
- Free Play/ Outside.
- Structured Play, for example, painting.
- All sit down for snack time.
- Free play.
- Tidy up.
- Song time.





Brighter Futures

Registered Charity No: 204



Brighter Futures Limited

Registered Charity No. 204

Email: info@brighterfutures.org.je

Tel: 01534 449487

For more information please visit.

www.brighterfutures.org.je



BrighterFuturesJersey



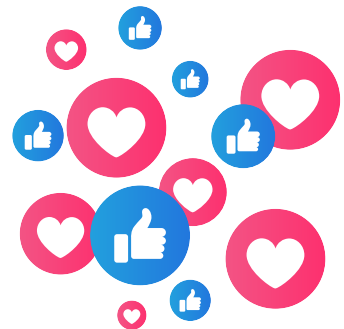
brighter_futures_jersey



Brighter Futures Jersey



@brightfutureje



Follow us on social media for topical information, support, news, parental guidance, and Brighter Future updates.